



CELTO



D48 Quick Start Guide

V2 2024-07

1. Product Introduction

CELTO D48 is a premium 4in x 8out Loudspeaker Management System with top-of-the-line SHARC floating point DSP, high-end sound quality and extended feature set.

D48 features 16 programable filters per input and per output, gain control, matrix routing, feedback suppressors, noise gates, TrueRMS voltage limiters, built-in signal generators, up to 48dB/oct crossovers, long delays, and advanced security management to handle the most demanding projects.

Main features:

- SHARC 21489 floating point DSP with external memory
- 96kHz sampling rate
- Ultra low noise opamps and audiophile grade capacitors
- 118dB dynamic range converters
- Easy to use front panel interface
- 2AES stereo digital inputs
- 100M Ethernet interface
- Intuitive PC software with Network Auto Discovery
- Advanced password management
- Fast copy of channel parameters
- Firmware update by user
- 32 user memories

2. Documentation and Software

Scan the QR Codes below:



This manual
(PDF format)



D48 Control Software for Windows
Executable setup
Recommended



D48 Control Software For Windows
Portable format
no installation required

3. Technical Specifications

Parameters	D48
Maximum input level	20dBu
Maximum output level	20dBu
Default output level	0dBu
Harmonic distortion THD+N	<0.005%@+4dBu 20Hz ~ 20kHz
Frequency response	20Hz ~ 20kHz ±0.3dB
Noise floor	-92dBu
Input-Output dynamic range	110dB
Signal-to-noise ratio	-110dB
DSP	SHARC 21489 at 400MHz
Sampling frequency	96K
Quantization	24Bit
User Memories	32
Control mode	100M Ethernet
Control software language	English
Noise gate	Yes
Feedback suppressor	Yes
Signal generator	Yes
Limiter	Yes
Delay	Output 1~4 : 218ms / 74m Output 5~8 : 148ms / 50m
PEQ Low Shelf High Shelf Allpass	16 filters per input and per output
Crossover High pass/low pass Bessel Butterworth Link-Riley	6dB/oct 12dB/oct 18dB/oct 24dB/oct 36dB/oct 48dB/oct
Digital Input	AES IN-A (1-2) AES IN-B (3-4)

4. Software operation

CELTO D48 Control software runs on Windows 7 / 10 / 11 (32 and 64 bit versions)

The software uses 50MB of storage and 2MB of RAM

Network environment: 100M LAN or wireless router

The software is available in 2 versions:

- Executable setup that will install all the files in a dedicated folder and set a shortcut in your desktop (recommended)
- ZIP archive that you must decompress on any folder of your computer. Simply launch “CELTO D48 Control.exe” to run the software (see *Illustration1* below).

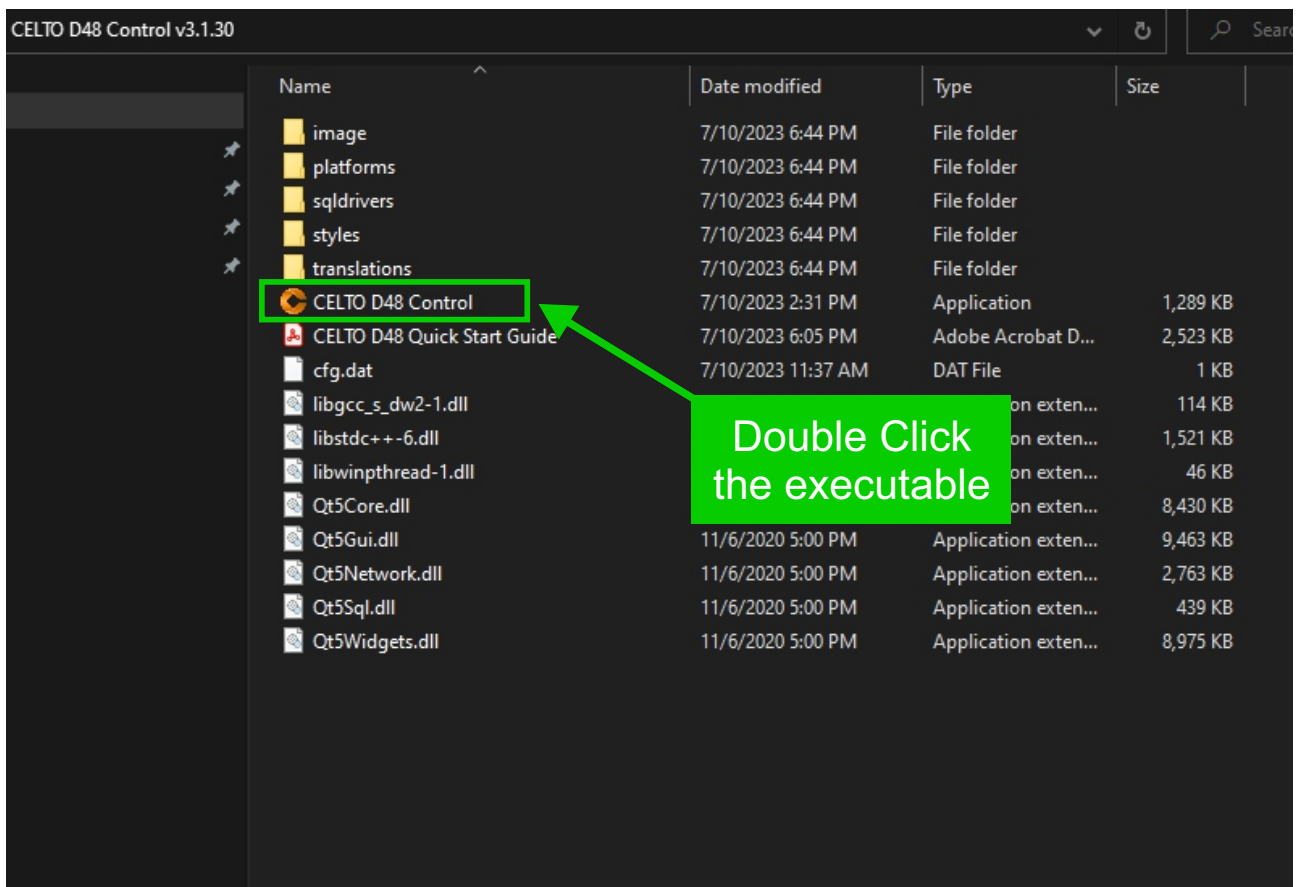


Illustration1: Folder structure after after UnZipping the archive

Once the software is running, Power ON the D48 unit and connect it to the network using the provided cable (or any standard RJ45 network cable)

The unit must be on the same Subnet mask than the computer running the software (same switch/router). Once the unit is connected to the network, the software automatically detects it and the unit appears in the device list.

TIP: During the first usage, you must allow the D48 Control software in the Windows Firewall for proper function.

Once one or multiple units are detected by the software, they appear on the left column.

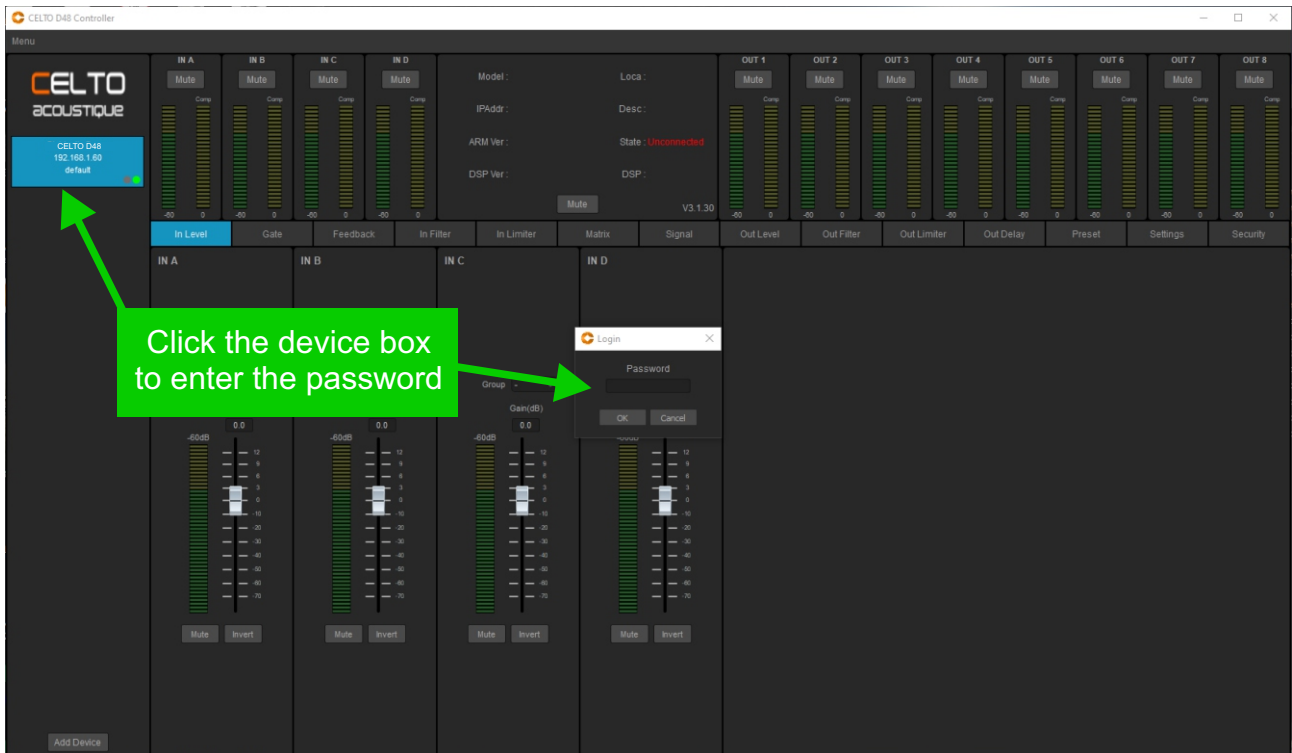


Illustration2: D48 Control main window after clicking the device box

Out of factory and after Reset, CELTO D48 comes with the following default values:

- Login password: admin
- Security password: ad123
-

The Login password is the password needed by the Control Software to connect to the unit.
The Security password is the password that protects user data.

TIP: Click [Menu] then [Device List] to see the connected units (see *Illustration3* below)

Device list												
	IP Address	Device Model	ARM Ver	DSP Ver	Location	Description	Device SN	Link Status	Runing Time	Total Time	Device ID	
1	192.168.1.60	D48	V3.1.34	V1.5.11	test	test	CN-0000-89E-1412	Connected	0day 00:02:02	0day 08:02:02	20258164551	Delete

Illustration3: Device List Window

After entering the Login password, user can access all the pages. By default, the software displays the **Input Level** page.

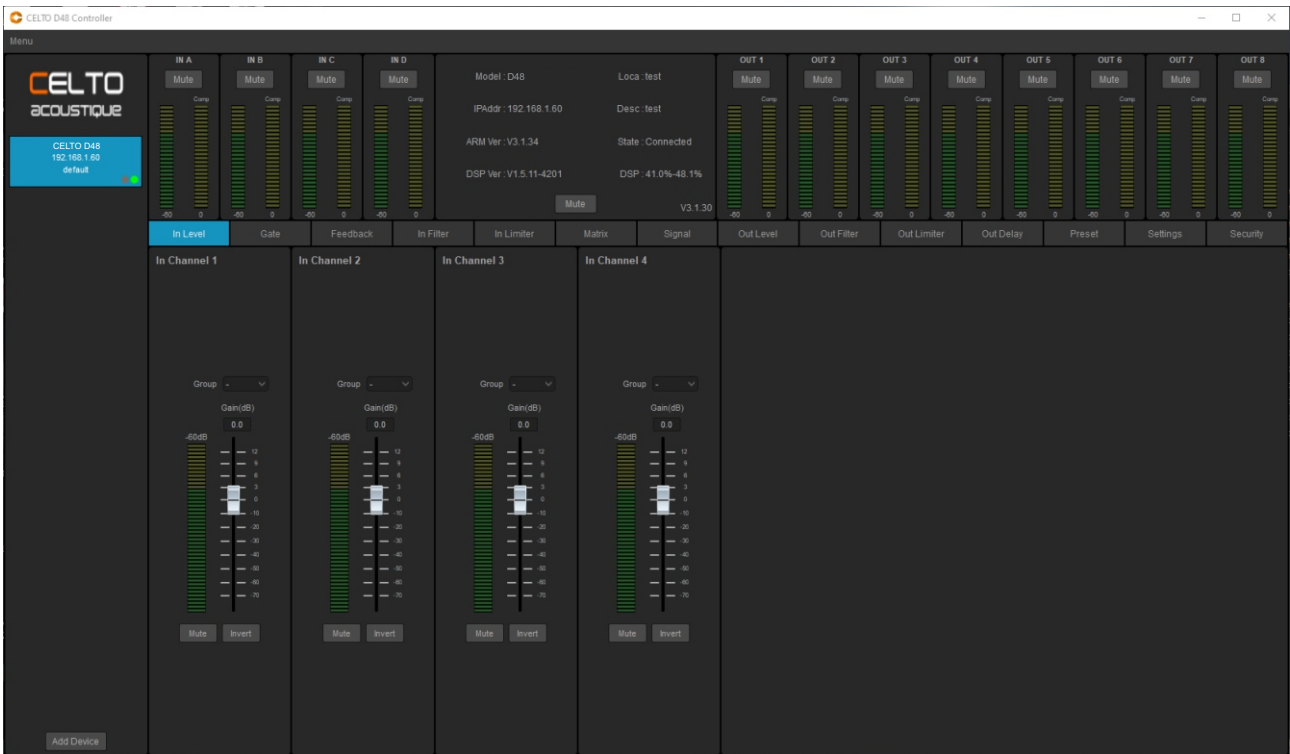


Illustration4: Main window after entering the Login password

The navigation bar is under the bargraph meters. Click the navigation bar to access the indicated page. Everything is self explanatory and easy to understand.

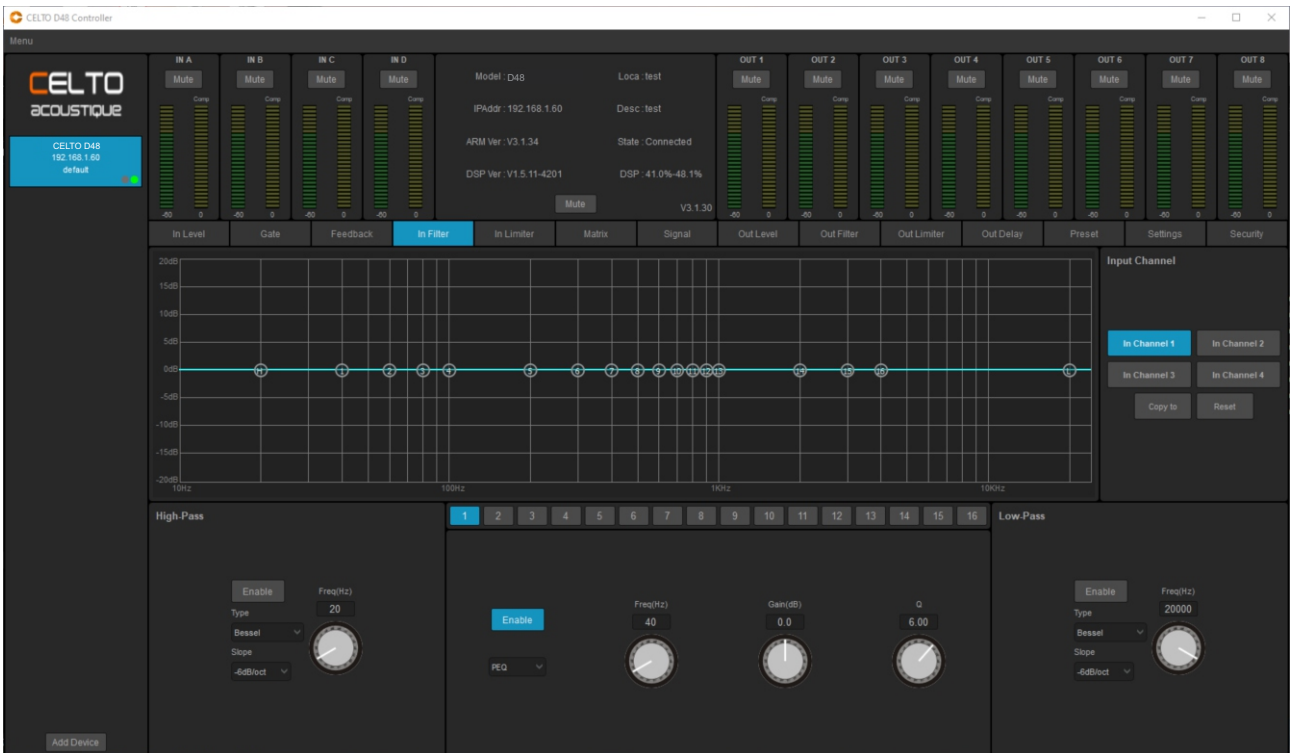


Illustration5: Input filter page

The **Settings** page allows the user to label the channels, lock the front panel and see the network parameters

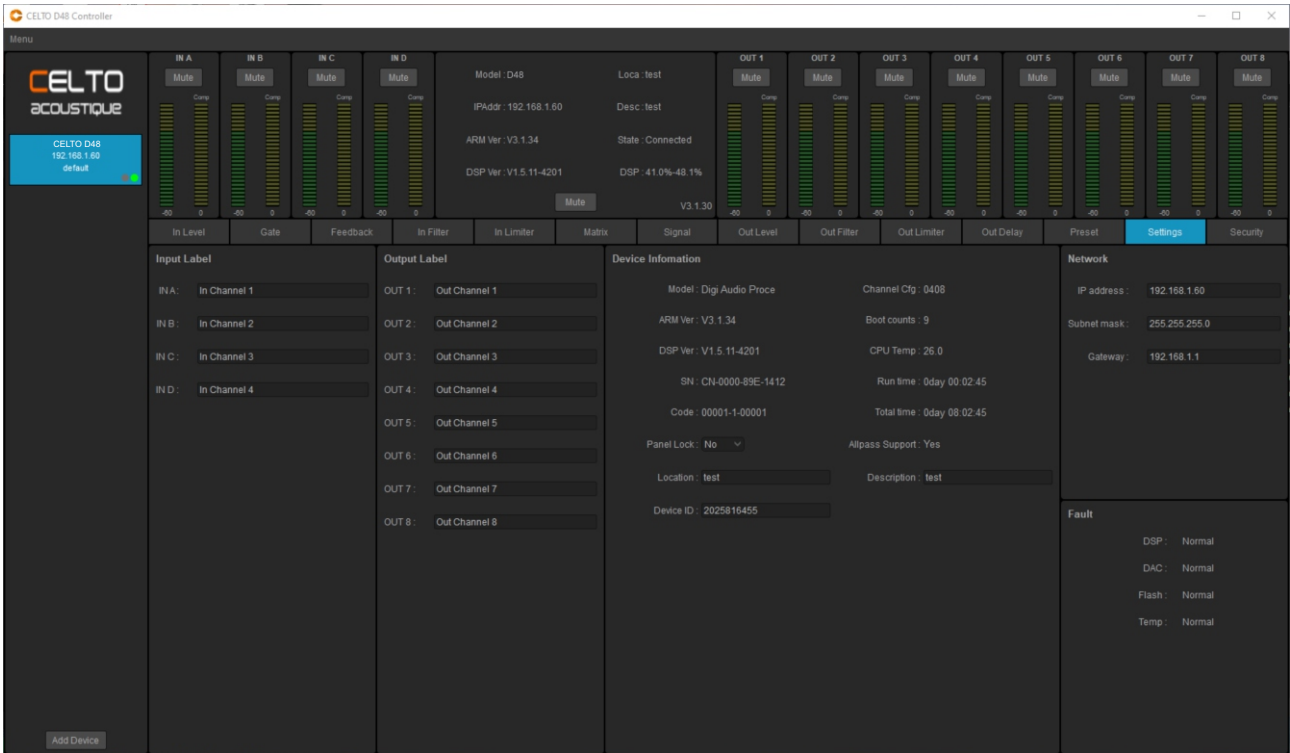


Illustration6: Settings page

The **Security** page allows the user to restrict access of every function individually. You can also change here the unit Security Password.

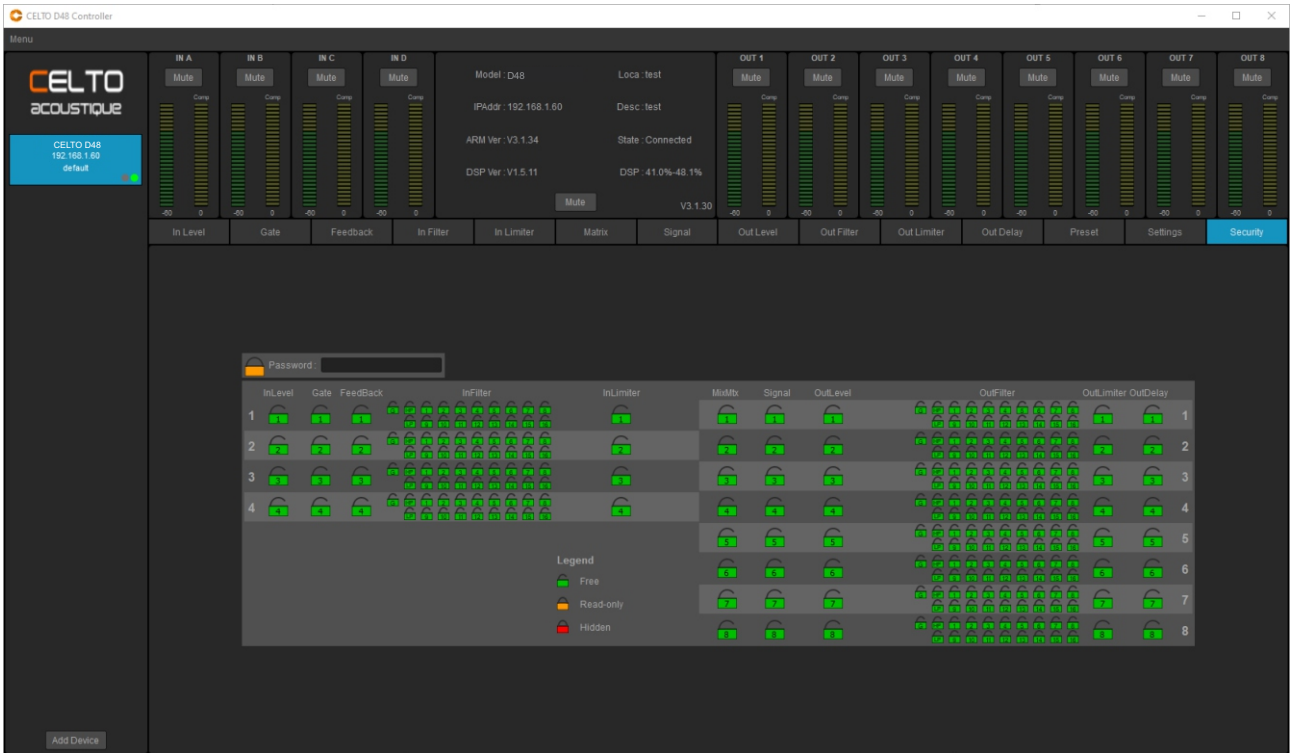


Illustration7: Security page



For more information and technical support
contact us at support@celtogroup.com