

# INTUPAK VRE11

Audio Remote Control Panel

RevB

## Welcome

Thank you for choosing INTUSONIC for your sound system. To make sure that this product meets your expectations and provides long-term, reliable performance, please read and follow this instruction manual carefully.

## Manual language

- UK** This user manual is written in English. For other languages, please use an auto-translation service of your choice.
- FR** Ce guide est écrit en anglais. Pour les autres langues, veuillez utiliser un service de traduction automatique de votre choix.
- DE** Diese Anleitung ist in Englisch verfasst. Für andere Sprachen verwenden Sie bitte einen automatischen Übersetzungsdienst Ihrer Wahl.
- ES** Este manual está escrito en Inglés. Para otros idiomas, utilice un servicio de traducción automática de su elección.
- PT** Este manual está escrito em Inglês. Para outros idiomas, use um serviço de tradução automática de sua escolha.
- IT** Questo manuale è scritto in inglese. Per altre lingue, utilizza un servizio di traduzione automatica a tua scelta.

## Important safety instructions

- Read these instructions and all markings on the product. Keep these instructions.
- Heed all warnings and instructions, both in this manual and on the product.
- Clean only with a dry cloth. Unplug the unit or its power adaptor/charger from AC supply before cleaning.
- Do not use this product near water and avoid any exposure to water.
- Before connecting this product to any AC supply (if any), make sure to check whether the AC mains voltage and frequency match the indication on the product and its packaging.
- Only connect this product or its power adaptor/charger to an AC supply (if any) with sufficient power handling, protective earth connection, ground-fault (earth-fault) protection and overload protection.
- Disconnect the product or its power adaptor/charger from the AC supply (if any) during thunderstorms or longer periods of being unused.

- Make sure any heat sink or other cooling surface, or any air convection slot, is exposed sufficiently to free air circulation and is not blocked.
- Do not operate this product in environmental temperatures exceeding 35 degrees Celsius and/or 85% relative humidity.
- Position the product in a safe and stable place for operation, out of reach of unauthorized persons.
- Make sure any cable connections to and from the product are neither subject to potentially destructive mechanical impact nor present any risk of stumbling or other accident risk to people.
- Audio equipment may generate sound pressure levels sufficient to cause permanent hearing damage to persons. Always start up at low volume settings and avoid prolonged exposure to sound pressure levels exceeding 90dB.
- Do not open this product for service purposes. There are no user-serviceable parts inside.
- Warranty will be void in any case of unauthorized service by the user or other not authorized persons.
- Take any precaution required by local law, applicable regulations or good business practice to avoid injury of people or material damage by use of this product.

## Symbols used in this manual



**DANGER!** Safety hazard. Risk of injury or death.



**ATTENTION!** Read manual before installation and operation.



**WARNING!** Hazardous voltage. Risk of severe or fatal electric shock.



**WARNING!** Fire hazard.

## Health Advice

This unit may produce and absorb electromagnetic radiation. The strength of radiation and the sensitivity for disturbing interference matches the CE and FCC requirements. A corresponding sign is printed on the backside of the unit. Any change or modification may affect the behavior of the unit concerning electromagnetic radiation, with the CE and FCC requirements eventually not to be met any more. The manufacturer takes no responsibility in this case.

## Functional Advice (only for powered products)

This unit is immune to the presence of electromagnetic disturbances – both conducted and radiated - up to a certain level. Under peak conditions, the unit is classified to show a “class C” performance criteria and may encounter temporary degradation or loss of function which may need manual help to recover. In such case, switch the unit off and back on to recover.

## Environmental Advice

This unit is built to conform to the ROHS-2 standard according to directive 2011/65/EU and the WEEE directive 2012/19/EU of the European Parliament and of the Council of the European Union. Under these regulations, the product shall not be discarded into regular garbage at the end of its life, but shall be returned to authorized recycling stations.

## Battery Advice (only for battery-powered products)

- Some products may contain a battery. Refer to the further chapters of this manual to determine whether this product contains a battery, and whether this is removable and/or rechargeable.
- Where applicable, adhere to the relative regulations in aviation transport.
- If the battery is rechargeable, the battery might not be fully charged or partly discharged at the time of purchase. Recharge before use. Only use recommended or included chargers with appropriate voltage/current rating.



**WARNING!** Fire hazard. Batteries might heat up during charging. Only charge in a place with sufficient air convection.

## Wireless Advice

- Some products may contain a wireless transmitter, receiver or transceiver. Refer to the further chapters of this manual to determine whether this product contains a wireless function, and in which frequency this operates.
- Make sure the frequency of operation does not require a specific license in the territory you operate the product in. If it does, obtain such license prior to any operation.
- Certain wireless technologies are designed for short distance operation. The actual distance will depend on how jammed the

frequency band is at the location of use. In adverse cases, operational distances might be as low as 5m. In normal circumstances, 10m can be assumed. Test the operational distance prior to relying on the wireless functionality in a specific application.

## Unpacking

Please check that the box contains the following items:

- 1 pc. main unit
- 1 pc. alternative front panel
- 1 pc. user manual

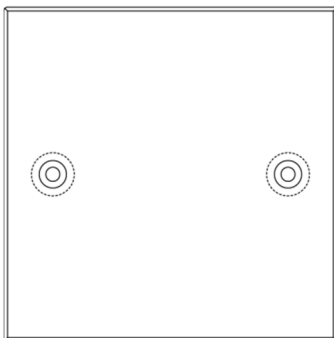
If any part is missing, please contact your dealer immediately for replacement.

## Mounting options

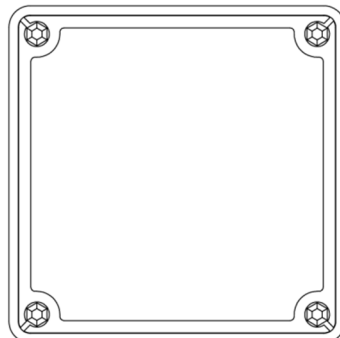
The VRE11 is designed to fit standard wall boxes, but the variety of different wall box types across various countries requires an individual assessment of the best mounting way for a specific situation. The VRE11 is conceived with the following two wall box styles in mind:

- 80mm EU style square wall box, with 4 corner mounting holes
- 86mm UK style square wall box, with 2 center mounting holes

UK BS 5733  
86x86mm Box

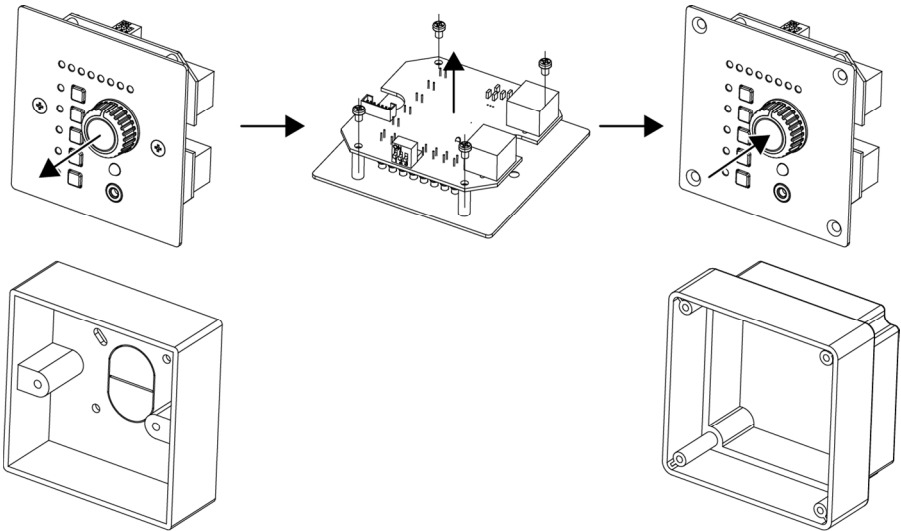


EU (VDE 0606-1)  
80x80mm Box



The ex-factory fitted panel is the UK-style panel. If the panel needs to be exchanged to the included EU-style replacement panel, follow the below procedure:

- Carefully pull off the volume control knob
- Loosen and remove the 4 rear-side screws which hold the PCB to the front panel.
- Carefully lift off the front panel.
- Fit the new front panel without applying any force. Make sure all switch caps and LED heads align with the apertures in the front panel.
- Re-fit the 4 mounting screws which hold the PCB to the front panel.
- Re-fit the volume control knob. Make sure to align the D-shaped cavity of the knob with the shaft of the rotary control.

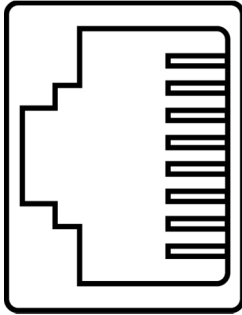


## About this product

The VRE11 is a wall-mounted remote control panel for compatible Intusonic products utilizing the Intulink™ bus. This wall remote control panel allows to remotely select a source, adjust the volume, observe the level setting and feed a local audio source to the controlled unit. The VRE11 is powered by the controlled unit through a single shielded CAT5/CAT6 cable.

## The Intulink™ bus system

The VRE11 uses Intusonic's Intulink™ control bus system, which uses standard CAT5/CAT6 shielded cables and combines RS485 control lines with power supply lines and a mono balanced audio connection according to the following pinout:



1. TXD/RXD-
2. TXD/RXD+
3. Not Connected
4. GND
5. Power +12V
6. Power -12V
7. Audio Mono Balanced +
8. Audio Mono Balanced -

A documentation of the RS485 commands used for remotely controlling devices with the Intulink™ bus system is continuously updated and hence only available for download from [www.intusonic.com](http://www.intusonic.com).



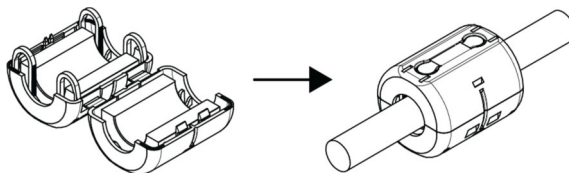
**WARNING!** Do not connect any other devices but Intusonic products with Intulink™ bus connection to the RJ45 ports of this unit. PC network connections or other manufacturer's RJ45-based interconnection systems are or may be incompatible, and the attempt of making such connection may result in damage of this unit or other equipment. The manufacturer accepts no claims towards damages evolving from incorrect connections.



**ATTENTION!** Do only use shielded CAT5/CAT6 cables with shielded connectors for better suppression of interference (EMI) in long cables runs.

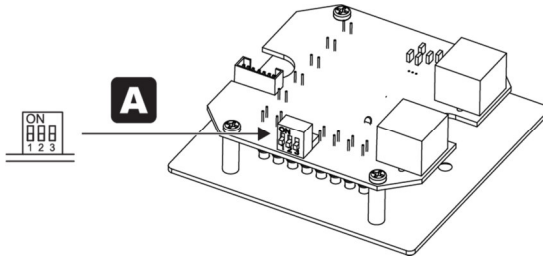


**ATTENTION!** To make sure that your installation complies with EMC requirements, you must attached snap-on ferrites to both ends or at least one end (recommended close to the main unit) of the CAT5/CAT6 cable(s).



## Configuration

The VRE11 can be configured to meet certain operational requirements by setting the rear-side switches:

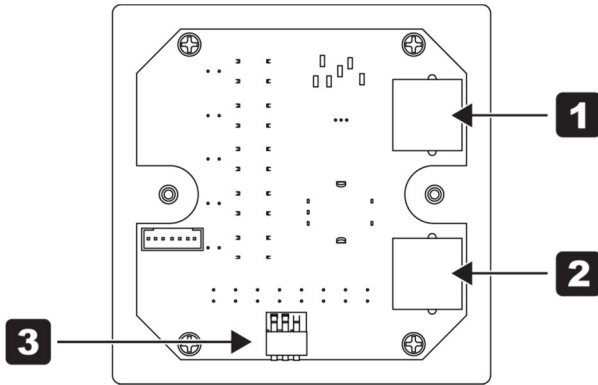


**A** **Zone setting.** This is a 3-position DIP switch allowing for 8 different settings, which refer to the unit being set to one out of 8 control zones that the Intulink™ bus system can administrate. As a default, the switch is set to Zone 1 (position OFF-OFF-OFF). Other zones can be set as follows:

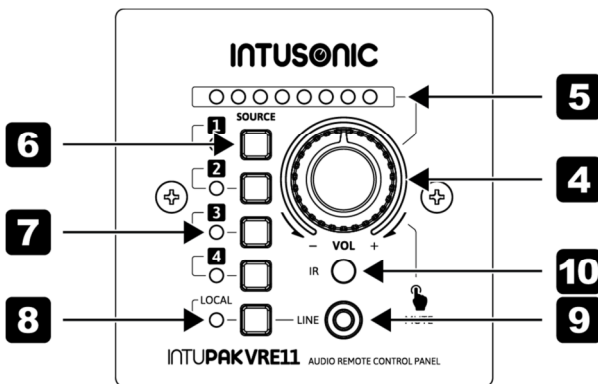
Zone #	Switch 1	Switch 2	Switch 3
1	OFF	OFF	OFF
2	ON	OFF	OFF
3	OFF	ON	OFF
4	ON	ON	OFF
5	OFF	OFF	ON
6	ON	OFF	ON
7	OFF	ON	ON
8	ON	ON	ON

Note that the VRE11 must be set to the same zone setting that the unit it is supposed to control.

## Controls and Connections



- 1 Remote control output.** This is a RJ45 jack for the connection of other Intusonic devices featuring the Intulink™ bus system.
- 2 Remote control loop-through.** This is a RJ45 jack for the connection of other Intusonic devices featuring the Intulink™ bus system.
- 3 DIP switch for zone setting.** Refer to the “configuration” chapter for details.



- 4 Volume control.** This is an infinite rotary encoder with integrated push switch. Turning the encoder clockwise will increase the volume

at the output of the controlled unit, turning the encoder counterclockwise will decrease the volume. The current volume setting will be indicated by the volume indicator LEDs (5). Pressing the encoder will invoke a mute status. All settings will be replicated on the user interface of the controlled unit.

**5 Volume indicator LEDs.** This linear arrangement of 8 LEDs indicates the current volume setting. The 8 LEDs will incrementally be lit when the volume is increased via the volume control (4). It takes more than one detent of turns with the volume control to invoke the next LED, as the number of internally available volume adjustment steps is bigger than 8. All indications will be replicated on the user interface of the controlled unit.

**6 Source selector switches.** These are tact switches accompanied by source status LEDs (7). Pressing one of these switches will change the active source to the selected source. The relative source status LED (7) will be lit. All settings will be replicated on the user interface of the controlled unit.

**7 Source status LEDs.** Once a source has been selected by the source selector switches (6), the relative source status LED will be lit. All indications will be replicated on the user interface of the controlled unit.

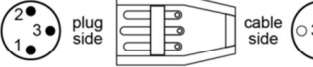
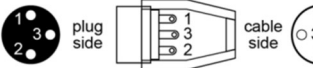
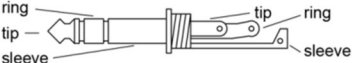
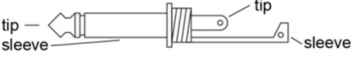
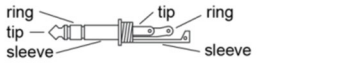
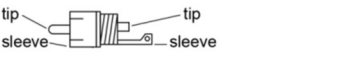
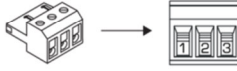
**8 Local source selector and indicator LED.** Pressing this switch will activate the audio replay from the local line input (9), and once active, the accompanying source indicator LED will be lit. Note that this external source can only be activated from the VRE11, but not from the controlled unit. The selection of this source is however indicated on the user interface of the controlled unit.

**9 Local audio line input.** This is a 3.5mm unbalanced TRS jack. Connect any local line-level source here. Note that while the jack accepts a stereo signal, the stereo signal will be summed to mono and will only become available as a source signal at the controlled unit in mono accordingly. Press the local audio source selector switch (8) to make this the active source.

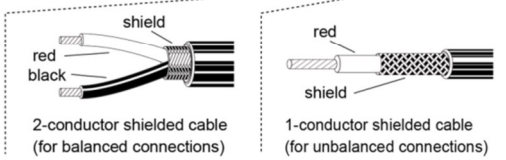
**10 IR sensor.** This optical sensor will receive the signals from an optional IRB44 infrared remote control, as long as there is a line of unobstructed sight between the unit and the infrared remote control. See any controlled unit's user manual for instructions about the IRB44 infrared remote control.

## Cabling

This product may use all or a selection of the below connector types, for which the pin assignment must comply with the following specification. Always make sure to use good connectors and cables to ensure proper operation. Balanced connections are to be preferred over unbalanced connections where applicable and feasible. Avoid unbalanced connections exceeding 2m of cable length.

	Structure	Balanced connection	Unbalanced connection
<b>XLR male</b>		red = 2 black = 3 shield = 1	red = 2 shield = 1+3
<b>XLR female</b>		red = 2 black = 3 shield = 1	red = 2 shield = 1+3
<b>6.35mm TRS-stereo</b>		red = tip black = ring shield = sleeve	red = tip shield = sleeve+ring
<b>6.35mm TRS-mono</b>		red = tip black = sleeve shield = uncon.	red = tip shield = sleeve
<b>3.5mm TRS-stereo</b>		red = tip black = ring shield = sleeve	red = tip shield = sleeve+ring
<b>RCA</b>		red = tip black = sleeve shield = uncon.	red = tip shield = sleeve
<b>Terminal Plug</b>		red = 1 black = 2 shield = 3	red = 1 shield = 2+3

**CABLE Types**



## Technical Data

Power supply	.....±12V DC via Intulink™ bus
Dimensions WxDxH (/w knob)	.....86x86x42 mm
Panel mounting depth	.....30 mm
Weight	.....0.15 kg

## Warranty

This product is guaranteed to be free of defects in material and workmanship at the time of purchase. Send-in warranty repair is granted for a period determined by

- A period of at least 6 months (from the date of purchase), or the minimum period required by law in the territory of sale, whichever is longer.
- A period of no longer (from the date of purchase) than the specified average lifetime of a component by the component's manufacturer.



## UK Declaration of Conformity

### The manufacturer

Adelto Industries, Unit 4 Britannia Business Park, Comet Way,  
Southend-on-Sea, Essex, SS2 6GE, United Kingdom

Declares at his sole responsibility that the equipment

### INTUSONIC VRE11

is in conformity with the relevant legislation of the United Kingdom as listed below, with the following applicable standards:

UK SI 2016 No. 1091 Electromagnetic Compatibility Regulations 2016:  
BS EN IEC 55035:2017

UK SI 2016 No. 1101 The Electrical Equipment (Safety) Regulations 2016:  
BS EN IEC 62368-1

UK SI 2012 No. 3032 Restriction of the Use of Certain Hazardous Substances in Electrical and Electronic Equipment Regulations 2012 (RoHS2)  
BS EN IEC 63000:2018

And is marked as follows:



Southend-on-Sea, 19<sup>th</sup> March 2021

A handwritten signature in black ink, appearing to read 'J. Johnson', is written over a white background.

Authorized Signature

## EC Declaration of Conformity

### The manufacturer

Adelto Industries, Unit 4 Britannia Business Park, Comet Way,  
Southend-on-Sea, Essex, SS2 6GE, United Kingdom

Declares at his sole responsibility that the equipment

### INTUSONIC VRE11

is in conformity with the following directives/standards/regulations:

EMC Directive 2014/30/EU

EN55035:2017

LVD Directive 2014/35/EU

EN62368-1

ROHS2 Directive 2011/65/EU & 2015/863/EU

EN63000:2018

And is marked as follows:



Southend-on-Sea, 19<sup>th</sup> March 2021

A handwritten signature in black ink, appearing to read 'J. Johnson'.

Authorized Signature

**INTUSONIC**

INTUSONIC is a brand of  
Universal Technical Industries Co. Ltd.

Concept, Design & Distribution by  
**Adelto Industries Limited**

Unit 4 Britannia Business Park  
Comet Way, Southend-on-Sea  
Essex, SS2 6GE, United Kingdom  
[www.adelto.com](http://www.adelto.com) / [sales@adelto.com](mailto:sales@adelto.com)